

# KARIBAN

**REFERENCE :** K446

**SIZES :** XS\_S\_M\_L\_XL\_XXL\_3XL\_4XL

**COMPOSITION :**

Main fabric : Brushed Combed Cotton / Polyester fleece 80/20 - 280 80%cotton / 20%polyester

Fabric 1 : Cotton single jersey (22/1) - 180 For hood lining, neckline property tape. 100%cotton

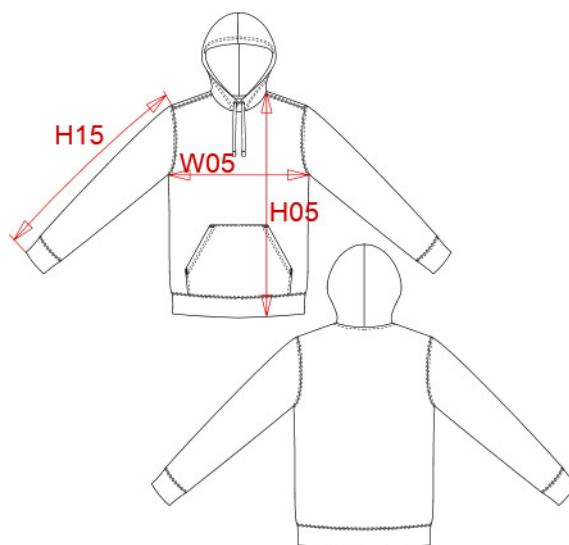
**WEIGHT :**

Main fabric : 280 gsm

Fabric 1 : 180 gsm

**ARTICLE WEIGHT :**

560 gr/pc



DESCRIPTION	
<b>Français :</b> Sweat-shirt capuche contrastée	
<b>English :</b> Contrast hooded sweatshirt	
<b>Nederlands :</b> Sweater met gecontrasteerde capuchon	
<b>Deutsch :</b> Bicolor kapuzen sweatshirt	
<b>Español :</b> Sudadera con capucha contrastada	
<b>Italiano :</b> Felpa cappuccio bicolore	
<b>Português :</b> Sweatshirt com capuz em contraste	

MEASUREMENT									
Description	XS	S	M	L	XL	XXL	3XL	4XL	
<b>W05 (M)</b> 1/2 largeur poitrine à 1.5cm de l'emmanchure / 1/2 chest width at 1.5cm below armhole	49	52	55	58	61	64	67	70	
<b>H05 (M)</b> Hauteur totale / Total height	69	71	73	75	77	79	81	83	
<b>H15I (M)</b> Longueur manche avec bord côte / Sleeve length with rib	63	64	65	66	67	68	69	70	

CARE LABEL				

PACKING	
Box	20 pcs / box XS => L:60cm W:40cm H:34cm GW:10.4kg NW:9kg S => L:60cm W:40cm H:34cm GW:11.1kg NW:9.7kg M => L:60cm W:40cm H:34cm GW:11.6kg NW:10.2kg L => L:60cm W:40cm H:36cm GW:12.2kg NW:10.7kg XL => L:60cm W:40cm H:36cm GW:12.8kg NW:11.3kg XXL => L:60cm W:40cm H:36cm GW:13.5kg NW:12kg 3XL => L:60cm W:40cm H:38cm GW:14.5kg NW:13kg 4XL => L:60cm W:40cm H:38cm GW:15.5kg NW:14kg

COLORS	PANTONE SERIGRAPHIE
Red / White	200C / White
Black / Red	Black / 200C
Orange / White	1585C / White
Light kelly green / White	7482C / White
White / Fine grey	White / 877C
Black / Yellow	Black / 1235C
Dark grey / Black	447C / Black
Light royal blue / Yellow	653C / 1235C
Navy / Fine grey	433C / 877C
Oxford grey / Navy	Based on Cool gray 7C / 433C
Black / Fine grey	Black / 877C
Tropical blue / White	7468C / White
Navy / Red	433C / 200C
Light royal blue / White	653C / White
Fuchsia / Fine grey	7425C / 877C
Sky blue / White	278C / White
Purple / Oxford grey	7447C / Based on Cool gray 7C