

KARIBAN

REFERENCE : K480

SIZES : S_M_L_XL_XXL_3XL

COMPOSITION :

Main fabric : French Terry Organic Cotton / Recycled Polyester
fleece 80/20 - 300 GOTS and RCS certified

For body

WEIGHT :

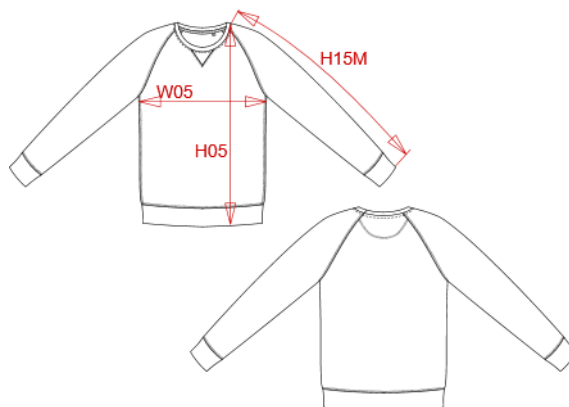
Main fabric : 300 gsm

TECHNICAL DETAIL :

LST (Low Shrinkage Terry)

ARTICLE WEIGHT :

445 gr/pc



| DESCRIPTION | |
|---------------------|---|
| Français : | Sweat-shirt BIO col rond manches raglan homme |
| English : | Men's organic cotton crew neck raglan sleeve sweatshirt |
| Nederlands : | Herensweater BIO ronde hals raglanmouwen |
| Deutsch : | Herren Sweatshirt BIO-BAUMWOLLE Rundhalsausschnitt |
| Español : | Sudadera orgánica con cuello redondo y manga raglán para hombre |
| Italiano : | Felpa uomo BIO collo rotondo maniche raglan |
| Português : | Sweatshirt BIO de homem com decote redondo e mangas raglan |

| COLORS | PANTONE SERIGRAPHIE |
|---------------------|---------------------|
| Black | Black |
| Navy | 433C |
| Red | 200C |
| Storm grey | 425C |
| Mossy green | 7771C |
| Grey heather | Based on 417C |
| French navy heather | Based on 432C |
| Wine heather | Based on 497C |
| Ocean blue heather | Based on 654C |
| Snow grey | 421C |
| Sage | 5635C |
| Lemon yellow | 586C |

| MEASUREMENT | | | | | | | |
|--|----|-------|-------|-------|-----|-------|--|
| Description | S | M | L | XL | XXL | 3XL | |
| H05 (M) Hauteur totale / Total height | 71 | 73 | 75 | 77 | 79 | 81 | |
| W05 (M) 1/2 largeur poitrine à 1.5cm de l'emmanchure / 1/2 chest width at 1.5cm below armhole | 52 | 55 | 58 | 61 | 64 | 67 | |
| H15M (M) Longueur manche longue raglan / Long raglan sleeve length | 76 | 77,75 | 79,50 | 81,25 | 83 | 84,75 | |

| CARE LABEL | | | | |
|------------|--|--|--|--|
| | | | | |

| PACKING | |
|---------|---|
| Box | 20 pcs / box S => L:60cm W:40cm H:cm GW:kg NW:kg M => L:60cm W:40cm H:cm GW:kg NW:kg L => L:60cm W:40cm H:cm GW:kg NW:kg XL => L:60cm W:40cm H:cm GW:kg NW:kg XXL => L:60cm W:40cm H:cm GW:kg NW:kg 3XL => L:60cm W:40cm H:cm GW:kg NW:kg |